



SAW GUIDE - PIPE & SAW GUIDE - TUBES

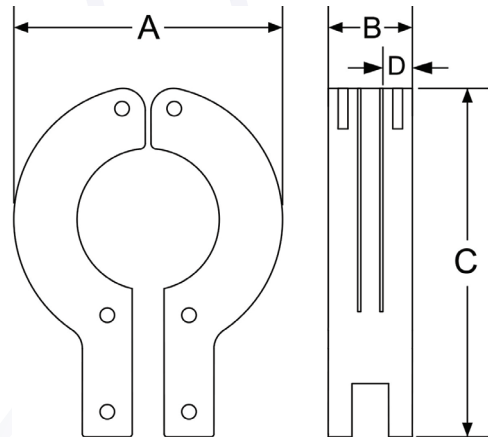
A hardened solid pin is inserted into the guide just below the finished cut line that will stop the saw blade from cutting into the guide. If the saw blade comes in contact with the pin, the pin will spin and not damage the saw blade or the guide.

Easy Setup The wing nut design allows the guide to be locked onto the pipe without the use of external devices.

Just wrap the guide around the pipe and tighten the wing nut for the cutting operation.

The hardened steel saw guide is nickel plated to ensure non-contamination of the pipe or tube.

Double slot guide has two slots. Narrow for a Portaband and a wider one for a Sawzall blade. This is to ensure that the tolerances are kept tighter on the cut on the 1/2" thru 3.5" sizes. The 4" and 6" have single slots.



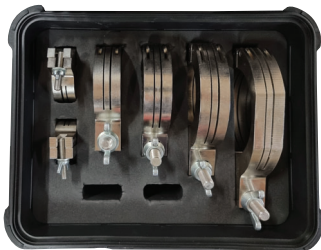
SIZE	A	B	C	D
.50	1.75	.75	2.37	.236
.75	1.93	.75	2.75	.236
1.00	2.31	1.00	3.12	.354
1.50	2.87	1.00	3.56	.354
2.00	3.75	1.18	4.93	.413
2.50	4.25	1.18	5.25	.413
3.00	4.87	1.18	6.18	.413
4.00	4.56	1.18	7.37	.413



TSGPKIT1-4
Saw guide kit pipe 1-4" (25 - 100 mm)

SAW GUIDE PIPE

- TSG500P** Saw guide pipe .5" (12.5 mm)
- TSG750P** Saw guide pipe .75" (19 mm)
- TSG1P** Saw guide pipe 1" (25 mm)
- TSG125P** Saw guide pipe 1.25" (31 mm)
- TSG15P** Saw guide pipe 1.5" (38 mm)
- TSG2P** Saw guide pipe 2" (50 mm)
- TSG25P** Saw guide pipe 2.5" (63 mm)
- TSG3P** Saw guide pipe 3" (75 mm)
- TSG4P** Saw guide pipe 4" (100 mm)
- TSG6P** Saw guide pipe 6" (150 mm)



TSGTKIT1-4
Saw guide kit tube 1-4" (25 - 100 mm)

SAW GUIDE TUBE

- TSG500T** Saw guide tube .5" (12.5 mm)
- TSG750T** Saw guide tube .75" (19 mm)
- TSG1T** Saw guide tube 1" (25 mm)
- TSG125T** Saw guide tube 1.25" (31 mm)
- TSG15T** Saw guide tube 1.5" (38 mm)
- TSG2T** Saw guide tube 2" (50 mm)
- TSG25T** Saw guide tube 2.5" (63 mm)
- TSG3T** Saw guide tube 3" (75 mm)
- TSG4T** Saw guide tube 4" (100 mm)
- TSG6T** Saw guide tube 6" (150 mm)
- TSGTKIT1-4** Saw guide kit tube 1-4" (25 - 100 mm)



Contact Us for a Quote

www.arcweld.co.nz | sales@arcweld.co.nz | 0800 272 935